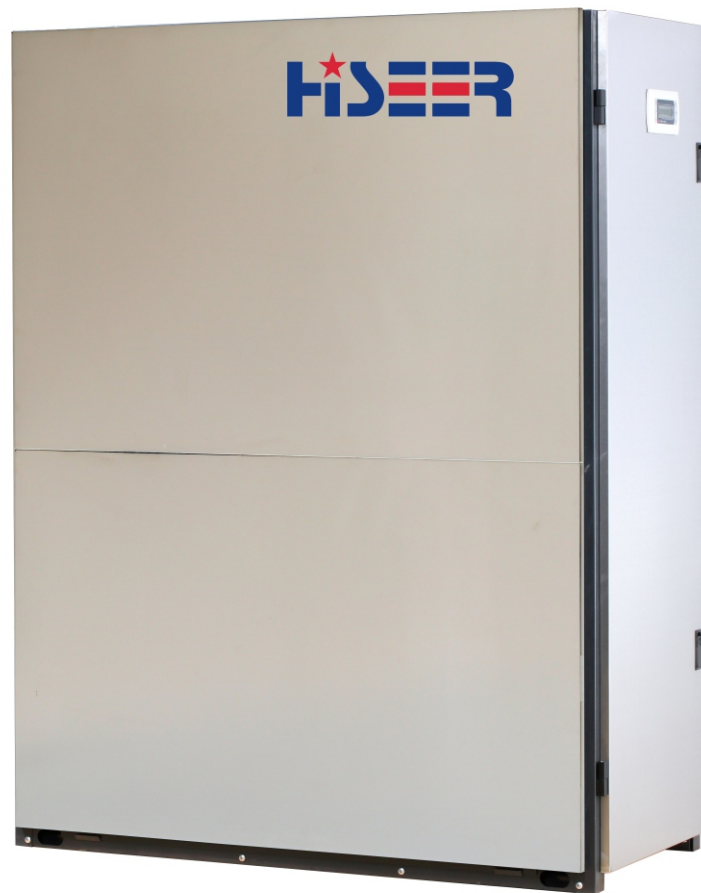




GEO THERMAL

HEAT PUMP GS60



www.chinaheatpump.com

Guangzhou Hiseer Air Conditioning Co. , Ltd

Main Components:

- Carel controller CPPB006DS0:
stable performance
user friendly interface



- Compressor :

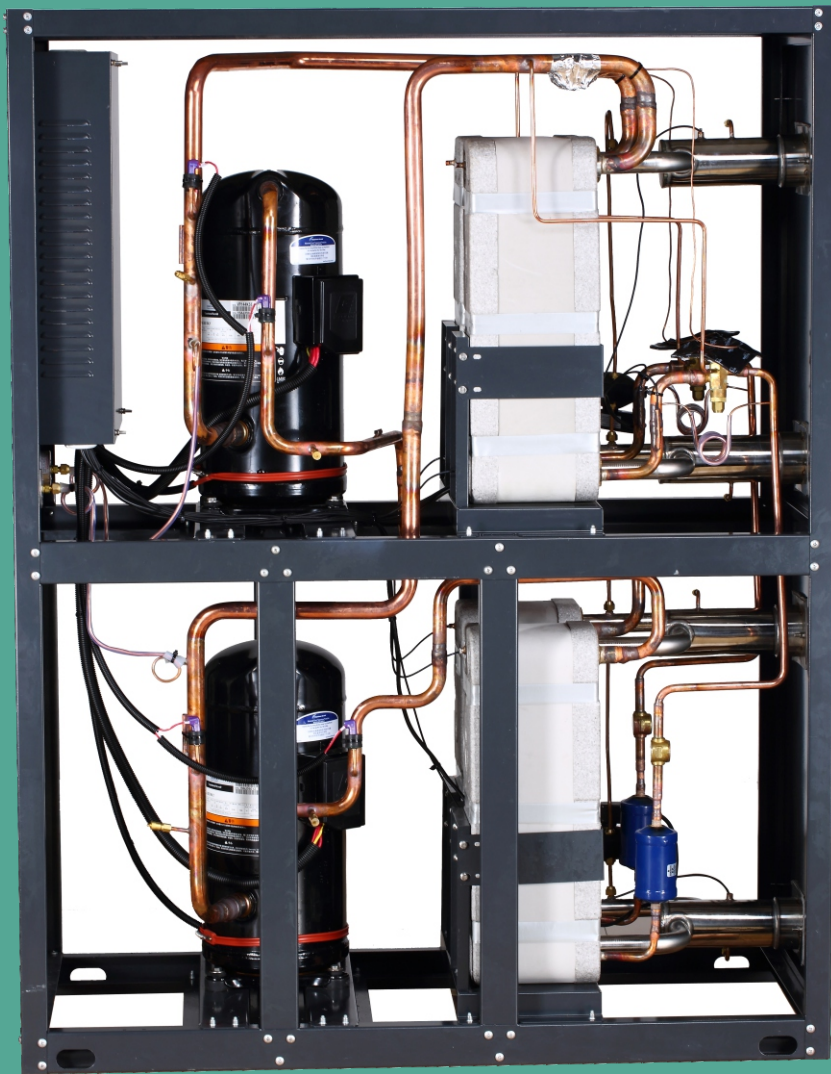


- High efficiency heat exchanger:



- Differential pressure flow switch:







Performance Data

Heating only model:

Heat pump		Type	GS60
Dimensions,weights,connection dimensions			
Dimensions		HxWxD	1620x590X1270
Weight		kg	350
Refrigerant		Type	R410A
Pipe connector-Indoor side		Inch	G2 ¹ / ₂ ”
Pipe connector-Outdoor side		Inch	G2 ¹ / ₂ ”
Evaporator		Type	Brazed plate heat exchanger
Condenser		Type	Brazed plate heat exchanger
Compressor			2 x Copeland Scroll
Performance Heat pump			
Heat output	at B0/W35 ⁽¹⁾	kW	62.6
Power consumption		kW	16.2
Performance factor			3.86
Indoor side volume flow ⁽³⁾		m3/h	10.8
Outdoor side volume flow ⁽⁴⁾		m3/h	14.7
Heat output	at W10/W35 ⁽²⁾	kW	90.2
Power consumption		kW	15.88
Performance factor			5.68
Indoor side volume flow		m3/h	15.5
Outdoor side volume flow		m3/h	21.3
Power		Type	Triple phase
Sound power level		dB(A)	62

(1) B0/W35=Brine water inlet temperature 0°C, heating flow 35°C

(2) W10/W35=Well water inlet temperature 10°C, heating flow 35°C

(3) Test data above is according to EN14511



Performance Data

Heating and Cooling models:

Heat pump		Type	GS60/B
Dimensions,weights,connection dimensions			
Dimensions		HxWxD	1620x590X1270
Weight		kg	356
Refrigerant		Type	R410A
Pipe connector-Indoor side		Inch	G2 ¹ / ₂ ”
Pipe connector-Outdoor side		Inch	G2 ¹ / ₂ ”
Evaporator		Type	Brazed plate heat exchanger
Condenser		Type	Brazed plate heat exchanger
Compressor			2 x Copeland Scroll
Performance Heat pump			
Heat output	at B0/W35 ⁽¹⁾	kW	61.5
Power consumption		kW	16.2
Performance factor			3.8
Indoor side volume flow ⁽³⁾		m3/h	10.8
Outdoor side volume flow ⁽⁴⁾		m3/h	14.7
Heat output	at W10/W35 ⁽²⁾	kW	90
Power consumption		kW	16
Performance factor			5.63
Indoor side volume flow		m3/h	15.5
Outdoor side volume flow		m3/h	21.3
Cool output	at W30/W7 ⁽³⁾	kW	66
Power consumption		kW	16.2
Performance factor			4.07
Indoor side volume flow		m3/h	11.35
Outdoor side volume flow		m3/h	14.14
Power		Type	Triple phase
Sound power level		dB(A)	62

(1) B0/W35=Brine water inlet temperature 0°C, heating flow 35°C

(2) W10/W35=Well water inlet temperature 10°C, heating flow 35°C

(3) W30/W7=Cooling source water inlet temperature 30°C, Cooling medium flow 7°C

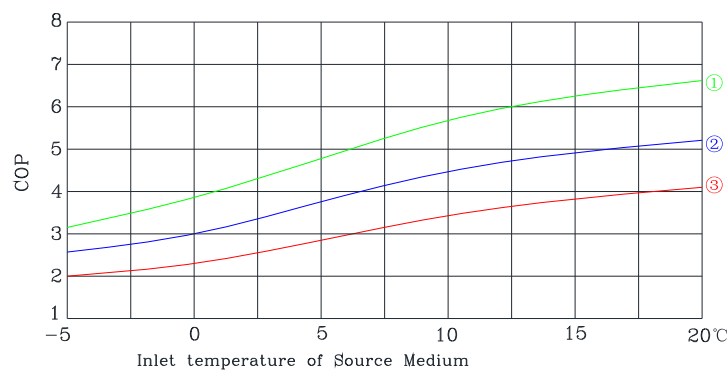
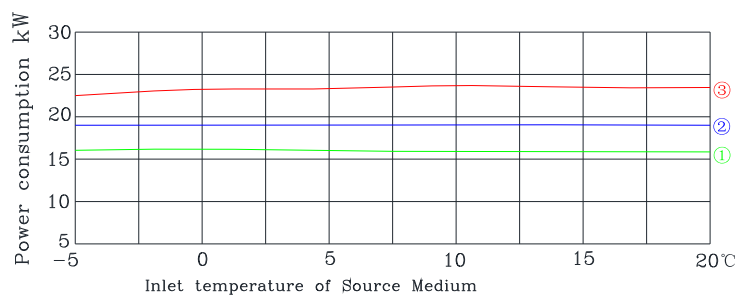
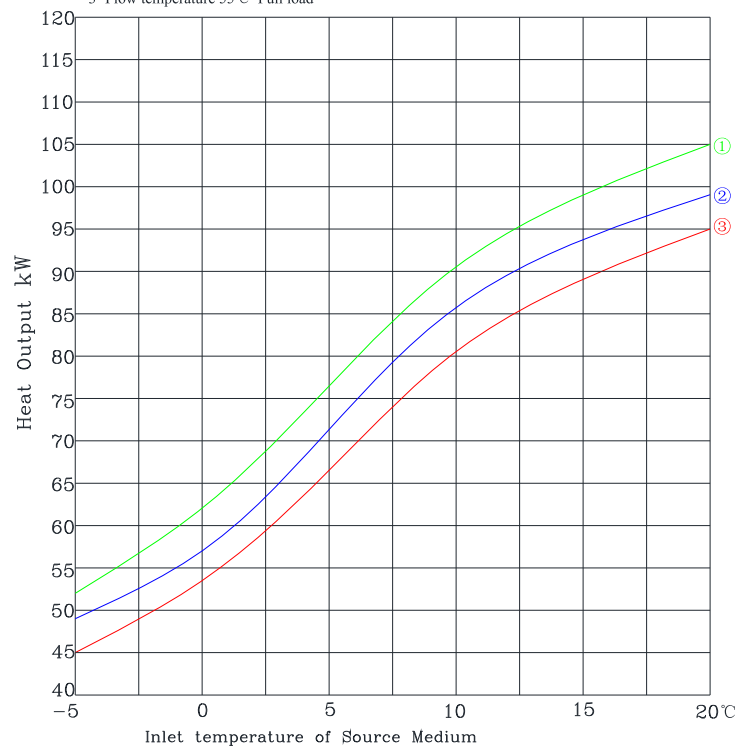
(4) Test data is according to EN14511



Performance Curve

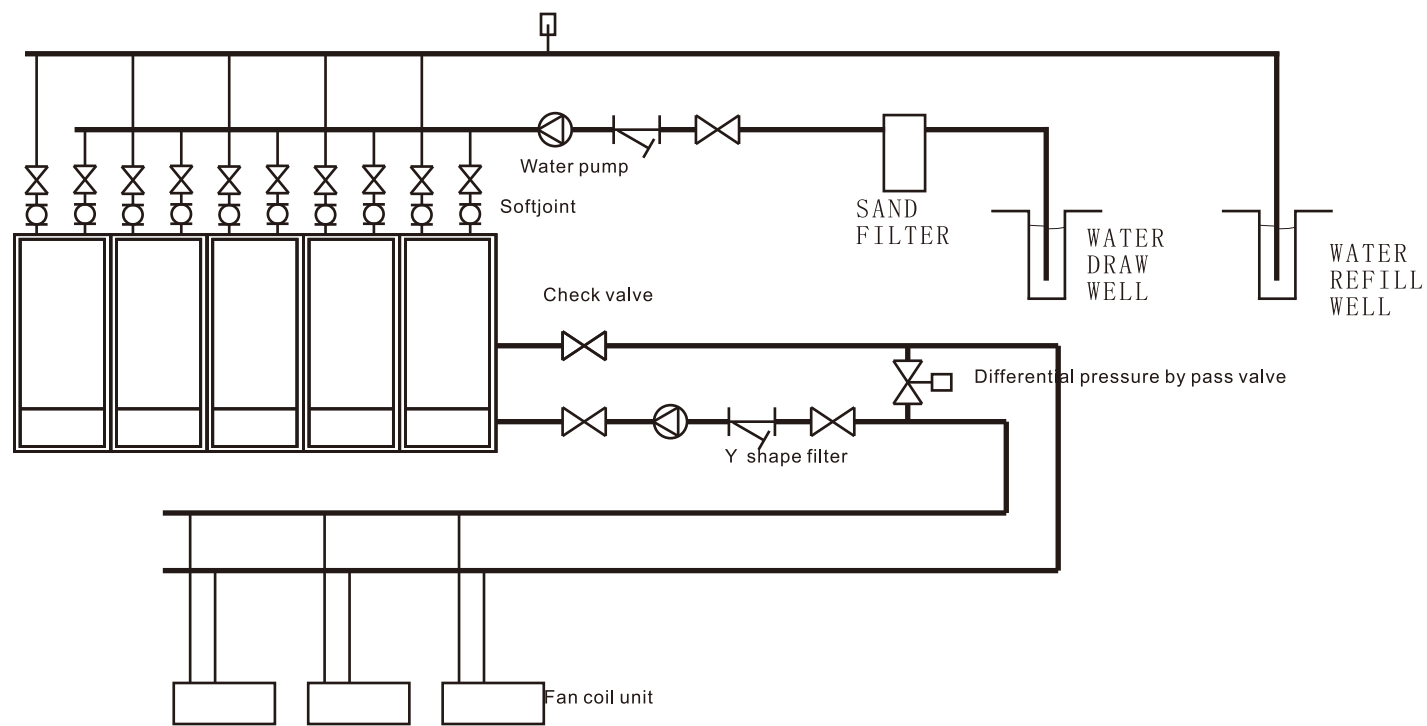
Model:GS60

Heating performance curve
1=Flow temperature 35℃ Full load
2=Flow temperature 45℃ Full load
3=Flow temperature 55℃ Full load

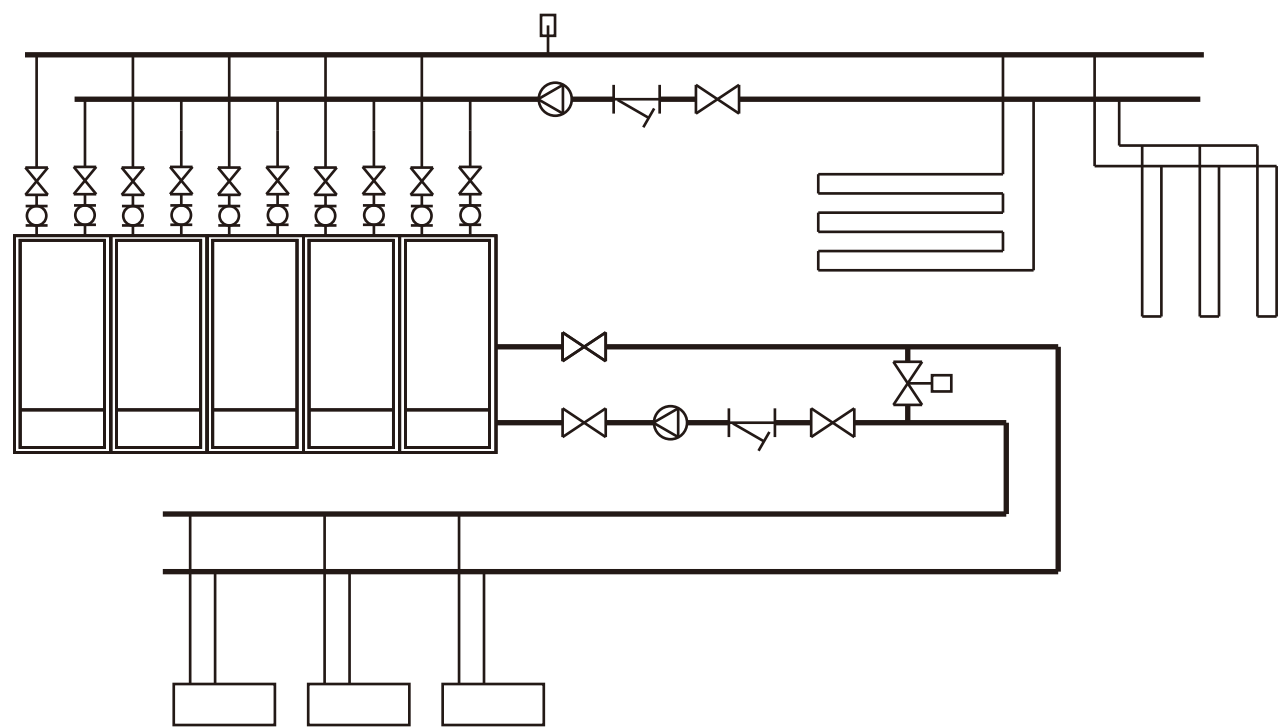


Application:

GROUND WATER SYSTEM

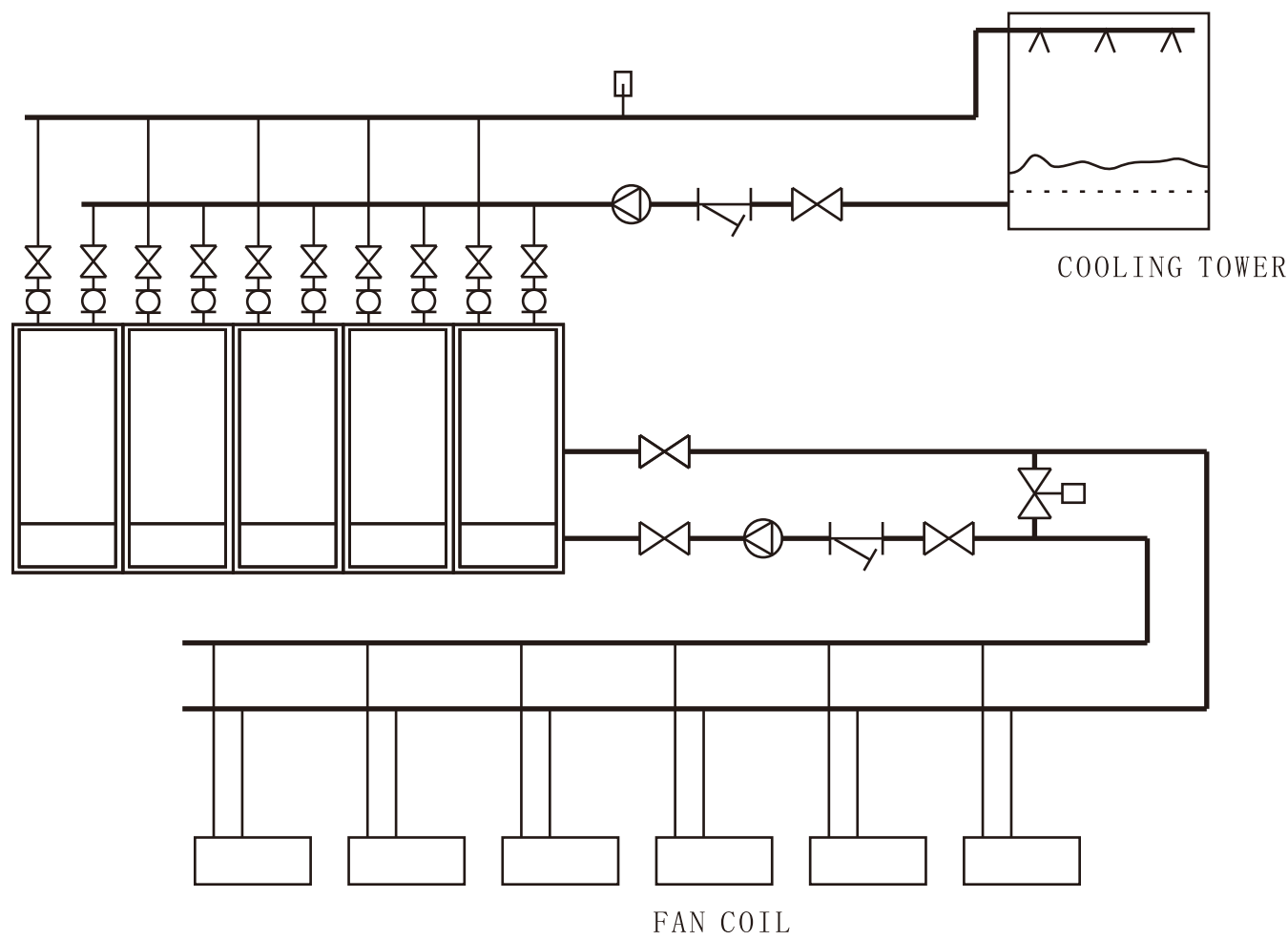


GROUND LOOP SYSTEM



Application:

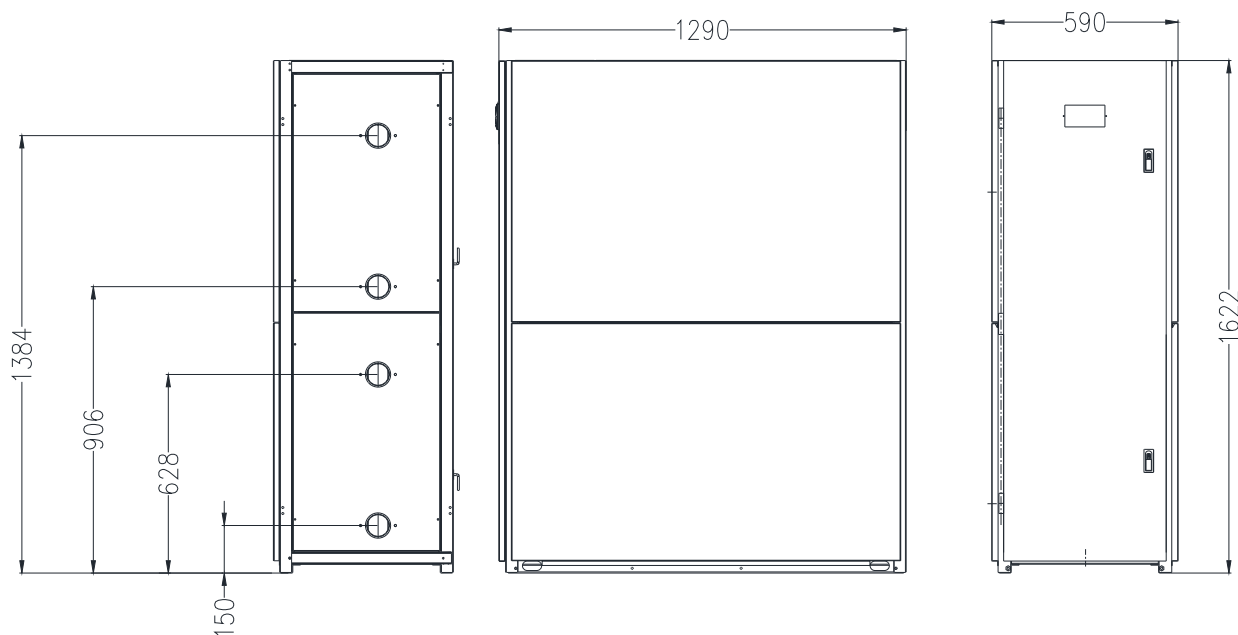
COOLING TOWER SYSTEM





Dimension

Unit:mm



Pressure drop

